

## GEMCO Gas Manometer (Low Pressure – mbar)

Standard:

# EN 837 – 1

### Technical Specifications

Application:

For natural gas, LPG, air and other non – corrosive gases

Case Material: Steel, black painted / Stainless steel optional

Bourdon Tube: Bronze / Brass (low pressure type)

Connection: Brass, bottom or back connection (G 1/4" standard)

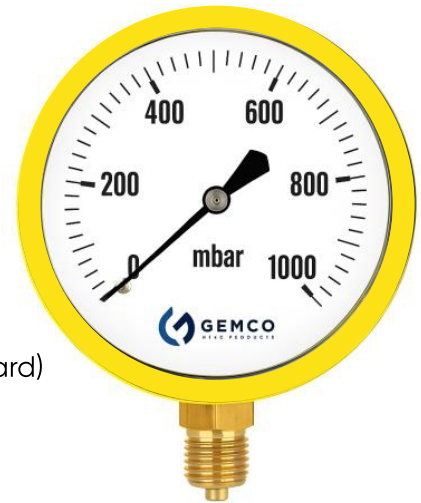
Accuracy Class: 1.6

Filling: Dry type (not glycerin filled, for gas use)

Scale Unit: mbar

Working Temperature: - 20°C to + 60°C

Mounting Type: Bottom or back connection, panel or surface mount.



### General Description

GEMCO low pressure gas manometers are designed for measuring very low pressures of non – corrosive gases such as natural gas, LPG, and air.

These gauges are ideal for use in gas distribution, pressure control, and HVAC systems. They are based on Pakkens low – pressure models and comply with EN 837 – 1 standards.

### Product Range

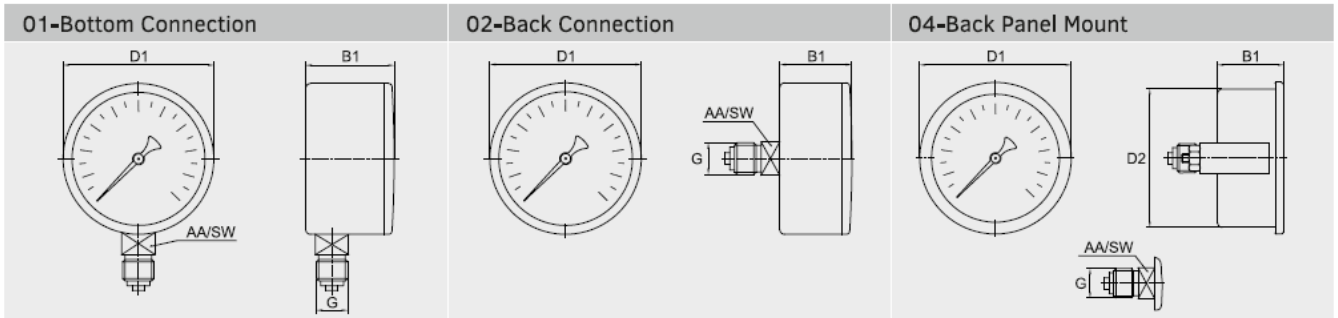
Dial Diameter (mm)	Pressure Range (mbar)	Mounting Type
63	0–60 / 0–100 / 0–160 / 0–250 / 0–400 / 0–600 / 0–1000	Bottom / Back Connection
100	0–60 / 0–100 / 0–160 / 0–250 / 0–400 / 0–600 / 0–1000	Bottom / Back Connection
160	0–60 / 0–100 / 0–160 / 0–250 / 0–400 / 0–600 / 0–1000	Bottom / Back Connection

### Notes

All GEMCO low – pressure gas manometers are tested for gas tightness and accuracy. OEM versions, custom logo printing, and calibration certificates are available upon request.

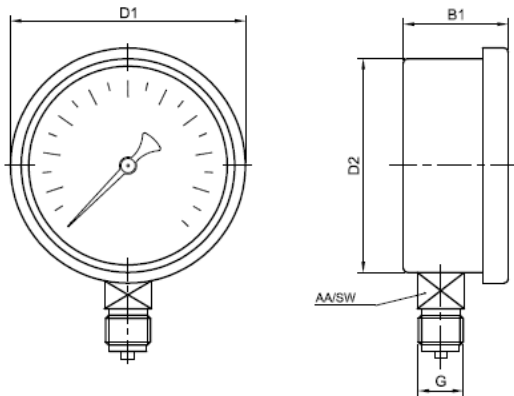
# GEMCO Gas Manometer (Low Pressure – mbar)

## Dimensions (mm) Ø63

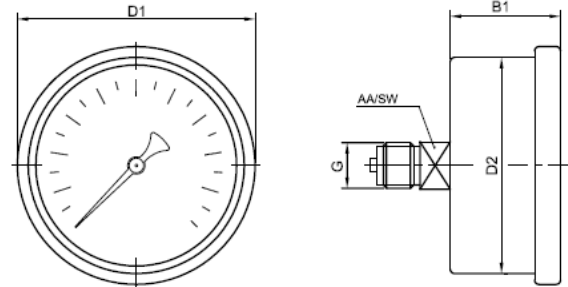


## Dimensions (mm) Ø100

### 01-Bottom Connection



### 02-Back Connection



Capsule Diaphragm Pressure Gauges are designed for accurate measurements of low-pressure ranges. They have various case designs and process connections for different industrial applications.

A modular capsule diaphragm made of copper-beryllium is the pressure sensing element of those pressure gauges. Therefore, capsule diaphragm pressure gauges are compatible with process fluids that do not wear copper-beryllium material.

Under relative or vacuum pressure, the amount of capsule diaphragm's expansion or contraction is proportional to the applied pressure and this is directly transferred to the movement of the pressure gauge. Custom logo printing, and calibration certificates are available upon request.