

GMC - DQ ELECTRICAL REGULATING BALL VALVE

GENERAL DESCRIPTION

In HVAC and water system, ball valves are used as automatic control valves.

It has adjustable flow ratio, high reliability and long service life.

It uses graphite to strengthen the valve body sealing ring and double EPDM valve stem sealing ring.

It has integrated valve distribution butterfly inside and is not afraid of reverse pressure difference.

It has the characteristic of equal percentage flow.

Its high turn-off pressure is 1.4 MPa.

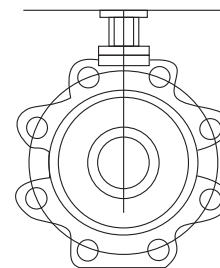
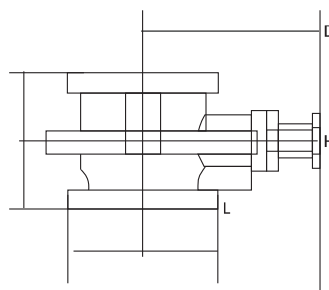
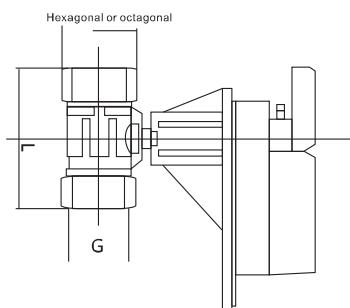
The rated working pressure is Pn20.

The maximum working pressure difference is 0.35Mpa.

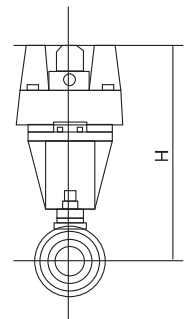
It has a manual actuator short-circuit push button.

Working temperature is -5 to 121 °C.

It is suitable for central air conditioning, hot and cold water supply system, steam humidification, etc.



DN65-150



DN15-50

DIMENSIONAL DRAWING

Model	G	H(mm)	H1(mm)	L(mm)	Model	Flange indexing circle	L(mm)	D(mm)	H(mm)	n-d
DN 15	G1/2	184	37.5	60	DN 65	145	97	105	136	4-18
DN 20	G3/4	184	44	73	DN 80	160	108	120	140	8-18
DN 25	G1	189	47	89	DN 100	175	120	145	104	8-18
DN 32	G1-1/4	199	52.5	102.5	DN 125	200	145	175	115	8-18
DN 40	G2-1/2	208	57	113	DN 50	230	165	205	138	8-18
DN 50	G2	219	62	127.5						

Dimension in : mm

GMC - DQ ELECTRICAL REGULATING BALL VALVE

SPECIFICATION

Model	Diameter	two-way flow	three-way branch flow	power supply	control signal	F auxiliary switch
GMC - DQ 15	DN 15	4.0	2.5	AC/DC24V/230V	switch/adjust	one set
GMC - DQ 20	DN 20	4.0	2.5	AC/DC24V/230V	switch/adjust	one set
GMC - DQ 25	DN 25	10.0	6.3	AC/DC24V/230V	switch/adjust	two sets
GMC - DQ 32	DN 32	16.0	10.0	AC/DC24V/230V	switch/adjust	two sets
GMC - DQ 40	DN 40	25.0	16.0	AC/DC24V/230V	switch/adjust	two sets
GMC - DQ 50	DN 50	40.0	25.0	AC/DC24V/230V	switch/adjust	two sets
GMC - DQ 65	DN 65	63.0	/	AC/DC24V/230V	switch/adjust	two sets
GMC - DQ 80	DN 80	100.0	/	AC/DC24V/230V	switch/adjust	two sets
GMC - DQ 100	DN 100	160.0	/	AC/DC24V/230V	switch/adjust	two sets
GMC - DQ 125	DN 125	250.0	/	AC/DC24V/230V	switch/adjust	two sets
GMC - DQ 150	DN 150	400.0	/	AC/DC24V/230V	switch/adjust	two sets

TECHNICAL PARAMETR

General	Value	General	Value
Diameter range	DN15-DN150	Rotation angle	0-90°
Connection mode	DN15-DN50(female thread connection) DN65-DN150(flanged connection)	Installation position	vertical installation
medium	Hot and cold water, unsaturated steam, 50% ethanol water, etc.	Flow characteristics	Equal percentage
Medium temperature range	-5°C-120°C	Bearing pressure of valve body	1.6Mpaflang2.0Mpa screw thread
Adjustable ratio of valve	>100	Material of valve body	Forged brass (thread) nodular cast iron (flange)
Leakage rat	no leakage from the factory	Valve core material	304 stainless steel
Max. allowable pressure difference	0.35Mpa	Valve stem material	304 stainless steel
Max. cut off pressure difference	1.4Mpa	Sealing ring	EPDM